

TIMBER & TERROIR

A FOCUS FEATURE FILM



**DOUGLAS
COUNTY**
FOREST PRODUCTS



"Timber & Terroir" is a captivating legacy film that encapsulates the journey of an ambitious craftsman constructing a wine house in Roseburg, Oregon, interlacing his efforts with the rich history of Douglas County Forest Products.

****Genre:**** Docu-drama

****Duration:**** 120 minutes

****Budget:**** \$325,000

Film Overview



Plot Synopsis

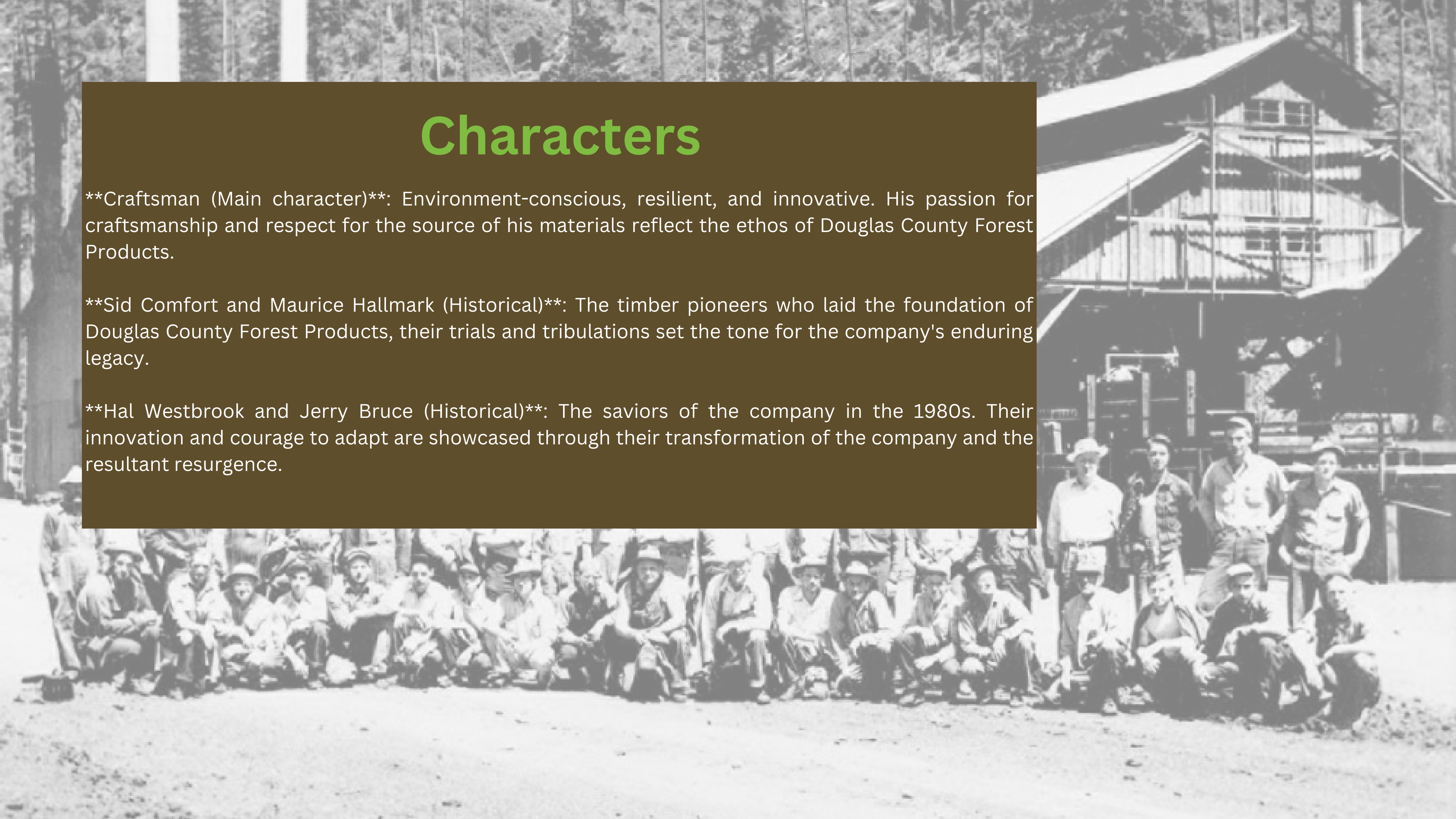
The film interweaves two narratives: the present, where an ardent craftsman uses Douglas County Forest Products timber to build a wine house, and the past, tracing the company's evolution since 1941. Each cut, carve, and construct in the present echoes the company's resilience, camaraderie, adaptability, and commitment to sustainability.

Characters

****Craftsman (Main character)**:** Environment-conscious, resilient, and innovative. His passion for craftsmanship and respect for the source of his materials reflect the ethos of Douglas County Forest Products.

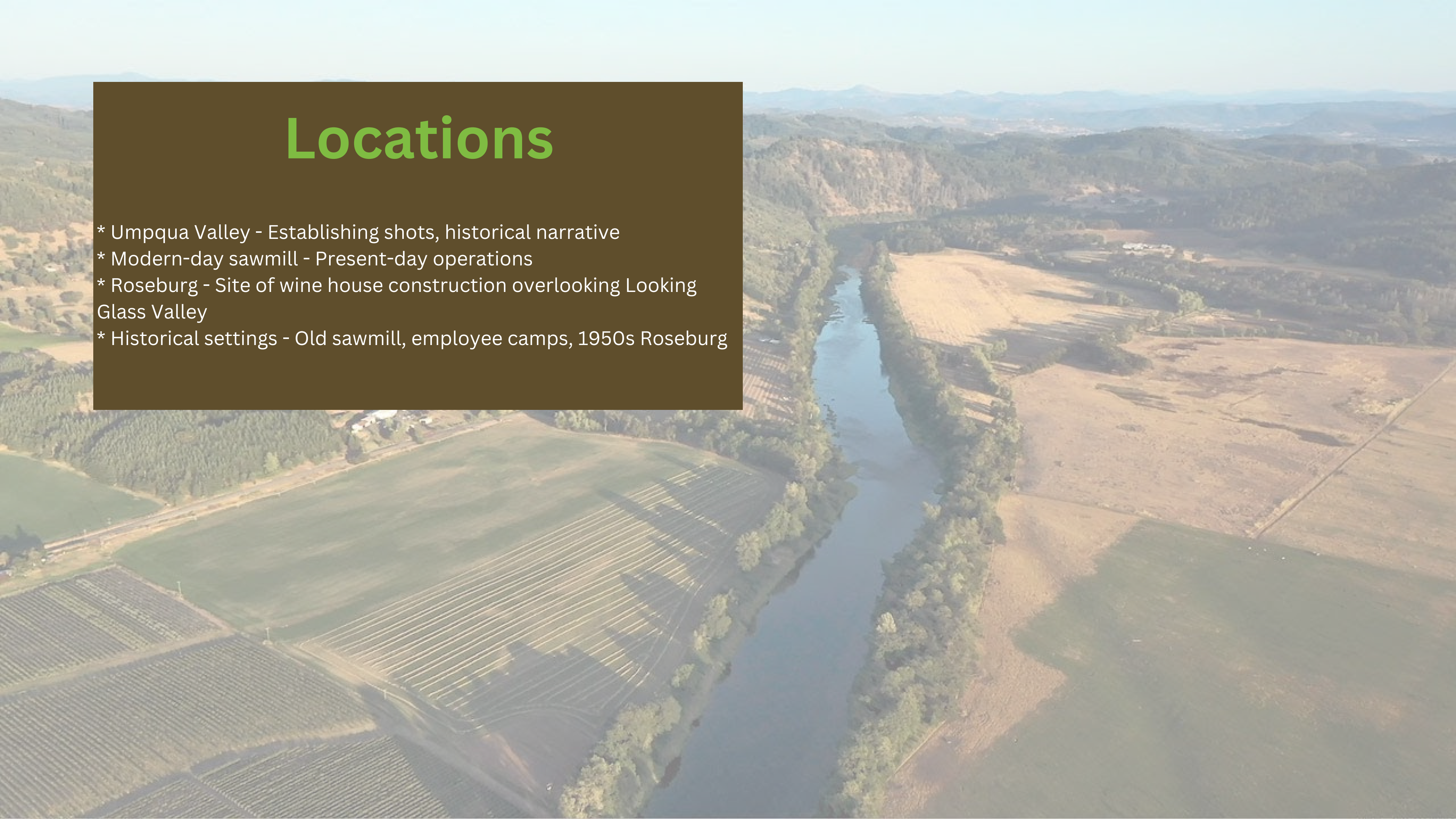
****Sid Comfort and Maurice Hallmark (Historical)**:** The timber pioneers who laid the foundation of Douglas County Forest Products, their trials and tribulations set the tone for the company's enduring legacy.

****Hal Westbrook and Jerry Bruce (Historical)**:** The saviors of the company in the 1980s. Their innovation and courage to adapt are showcased through their transformation of the company and the resultant resurgence.



Locations

- * Umpqua Valley - Establishing shots, historical narrative
- * Modern-day sawmill - Present-day operations
- * Roseburg - Site of wine house construction overlooking Looking Glass Valley
- * Historical settings - Old sawmill, employee camps, 1950s Roseburg



Production Details

****Script:**** A detailed script will be developed highlighting the parallel stories of the company's history and the wine house construction.

****Casting:**** We have a craftsman, as well as actors for the historical characters.

****Director:**** Wild Actual Crew will seamlessly blend historical & present-day narratives.

****Historical Research:**** To ensure authenticity, detailed research into the company's history, including interviews and archive exploration, is needed.

****Production Design:**** Historic settings, props, and costumes will need to be created. The design of the wine house is crucial, highlighting the beauty and quality of Douglas County Forest Products.

****Lumber:**** Douglas County Forest Products will provide the timber required for the wine house construction.



An aerial photograph of a dense forest. The trees are mostly green, but there are several distinct patches of yellow and light green, suggesting autumn foliage. The perspective is from directly above, looking down on the canopy.

Timeline

- Pre-production and research - 3 months
- Filming - 6 months
- Post-production and editing - 3 months

A modern house with a grey metal roof, solar panels, and vertical wood siding. The house has a gabled roof with a chimney on the left side. The siding is made of vertical wood panels. There are several windows, including a large one on the right side. The house is surrounded by trees and a gravel driveway.

Financials

A budget of \$325,000 will cover casting, crew, location expenses, production design, post-production, marketing, and Douglas County Forest Products will cover the cost of lumber and delivery.

Contact

Chad Copeland

541-797-1155

chad.copeland@me.com